

## DENTAL CARE



SAVE \$10



Hill's Prescription Diet **Dental Care** is a proven formula for your pets oral hygiene. The unique kibble shape helps scrub your pets mouth, removing tartar and stains that cause bad breath.

\*Available on Feline 1.5kg and 3kg, along with Canine 2.25kg bags



They'll love the taste, you'll love the benefits

FROM **\$14.40** Incl GST



## GROOMING



SAVE 20%

### Everyday Dog Shampoo and Conditioner 500ml

- Gentle formula to hydrate and moisturise
- Vanilla Blossom scented
- Environmentally friendly and 100% biodegradable
- Sold separately

Shampoo or Conditioner **\$21.10** Incl GST



## FLEA & WORM TREATMENT

### NexGard SPECTRA<sup>®</sup> SPOT-ON SOLUTION FOR CATS



Replaces **Broadline** Spot-on Solution for Cats



### NexGard SPECTRA<sup>®</sup> SPOT-ON SOLUTION FOR DOGS

Purchase any Nexgard Spectra product and go in the draw to WIN a Miele Vacuum Cleaner! Valued at \$990.00



## Simparica TRIO

one tasty chewable trio tablet

The flea, tick and worm treatment that goes down a treat!

5 Weeks protection against internal and external parasites from one tasty chewable

- ticks, fleas, heartworm disease, and gastrointestinal parasites



FREE Pet Keyring with every 3 Pack

Small 5.1-10kg	3 Pack	<b>\$55.40</b> Incl GST
Medium 10.1-20kg	3 Pack	<b>\$58.50</b>
Large 20.1-40kg	3 Pack	<b>\$58.80</b>
Extra Large 40.1-60kg	3 Pack	<b>\$62.20</b>

## Veterinary Centre

All prices and promotions in this issue are valid until the end of the month or while stocks last.

- Oamaru Ph 03 434 5666
- Timaru **COMING SOON!** Ph 03 684 5666
- Waimate Ph 03 689 7213
- Palmerston Ph 03 465 1291
- Glenavy Ph 03 689 8118
- Kurow Ph 03 436 0567
- Omarama Ph 03 438 9868
- Ranfurly Ph 03 444 1020

FREE PHONE 0800 838 111

www.vet111.co.nz

by the Big Blue Cross



OFFERS VALID FOR SEPTEMBER 2023

# Veterinary Centre



Feed your puppy a nutritionally complete diet tailored to their specific needs!



Spring into September



by the Big Blue Cross

## PROTECTING THE ENVIRONMENT



Recycled are made from 100% post-consumer material.

Pk60 **\$7.90** Incl GST



Compostable is suitable for your home compost bin

Pk48 **\$11.90** Incl GST

RRP \$14.90

SAVE!

Because your pet deserves the very best!



## Rearing Pet Lambs

Having children rear and care for a pet lamb is a wholesome and rewarding experience. It teaches them responsibility and reliability, and they see the results of their efforts in a healthy, growing, friendly animal. Some basic necessities to help your child successfully rear healthy pet lambs are:

- A warm, clean, dry and draught free environment to live in
- Unrestricted access to drinking water
- Colostrum if the lamb is found less than 24 hours old
- A good quality Lamb Milk Replacer – 1 lamb will consume approximately 10kg of Milk Replacer from birth to weaning. It is important to stick to the recommended feeding guidelines on the back of the packet to reduce the risk of complications.

No matter how busy our spring is, our vets will always find time to talk to and advise our young people in the best way to care for their new found friends.

## Essential Lamb Rearing Supplies

**10kg \$82.00**  
Incl GST

**600g \$49.70**  
Incl GST

**MILLIGANS FEEDS**

Give Colostrum in the first two days of life. A lamb reared from birth to weaning (35 days) will consume approx 8kg of Multi-milk Replacer (see feeding instructions on pack).

**EACH \$14.90**  
Incl GST

**EACH \$6.20**  
Incl GST

**Pk10 \$52.00**  
Incl GST

## DOGS

**BlackHawk®**

Dog food designed to support your dog's health and vitality at every stage of their life.

**20kg Bag**

**\$175.90**  
Incl GST

**SAVE 20%**

**FREE**  
Bag of Treats  
200-220g

Elsewhere up to **\$219.90**

**Average Daily Feed Guide**

BASED ON **16kg**

DAILY SERVE **205g**

BAG CONTAINS **98 Days**

**\$1.80**  
per day

## CATS & KITTENS

**BlackHawk®**  
Adult Cat Food

Available in Chicken & Rice, and Fish.

**BlackHawk®**

**SAVE 15%**

Elsewhere up to **\$59.90**

**3kg \$49.50**  
Incl GST

**Average Daily Feed Guide**

BASED ON **4.5kg**

DAILY SERVE **100g**

BAG CONTAINS **30 Days**

**\$1.65**  
per day

**Trouble & Trix**

**Natural Cat Litter**

Made from soy extract, this natural litter is flushable, dust-free, non-toxic, and non-tracking.

**7L \$23.90**  
Incl GST

**15L \$39.90**  
Incl GST

**FREE** Trouble & Trix Litter Catch Mat when you buy one 15L or two 7L bags of litter



## Interesting Case

### Dilated Cardiomyopathy (DCM) in Dogs

Abby Robertson BVSc – Veterinary Centre Oamaru

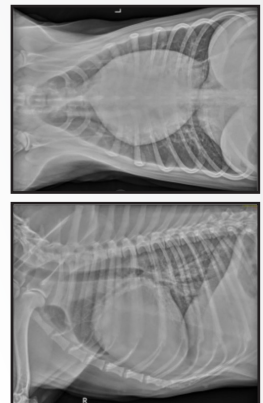
Lad is a beautiful Labrador and a much-loved patient here at the Veterinary Centre. He first came in for being off colour with a swollen tummy. He had a full investigation in which he was found to have a heart that was too large. While it would be nice to think that he had a large heart because of all the love he had to give, unfortunately Lad had a condition called dilated cardiomyopathy (DCM), the second most common heart condition in dogs and the most common in large breed dogs.

Cardiomyopathy is defined as degeneration of the heart muscle. As a result of this degeneration, the muscle becomes thinner, particularly the muscles of the left ventricle which do the hard work of pumping blood around the body. The pressure of the blood inside the heart causes these thin walls to stretch like a balloon resulting in a much larger heart.

In most cases the cause of DCM is unknown. Giant and large breed dogs of middle to older age are predisposed to developing DCM. Some breeds, such as Dobermans and Boxers are predisposed to inheriting a genetic form of DCM. There can be nutritional causes of DCM in diets deficient in taurine and there has been an increase in cases in dogs on gluten-free diets.

Because his heart was not doing the job it was supposed to, Lad's energy levels had reduced, and he had built up some fluid in his abdomen. These as well as some other signs such as falling over, and coughing can be common signs of heart disease in dogs.

There is no cure for DCM. Lad will need to take it easy and be on heart medication for the rest of his life. Since being on his medication, Lad is doing very well. The fluid in his abdomen has resolved and he is loving his farming life. We can also attest that he knows how to do some energetic tricks when a treat is on offer.



Chest x-rays from a dog with dilated cardiomyopathy (DCM) and significant heart enlargement.

Because your pet deserves the very best!

LIKE US ON **facebook**